

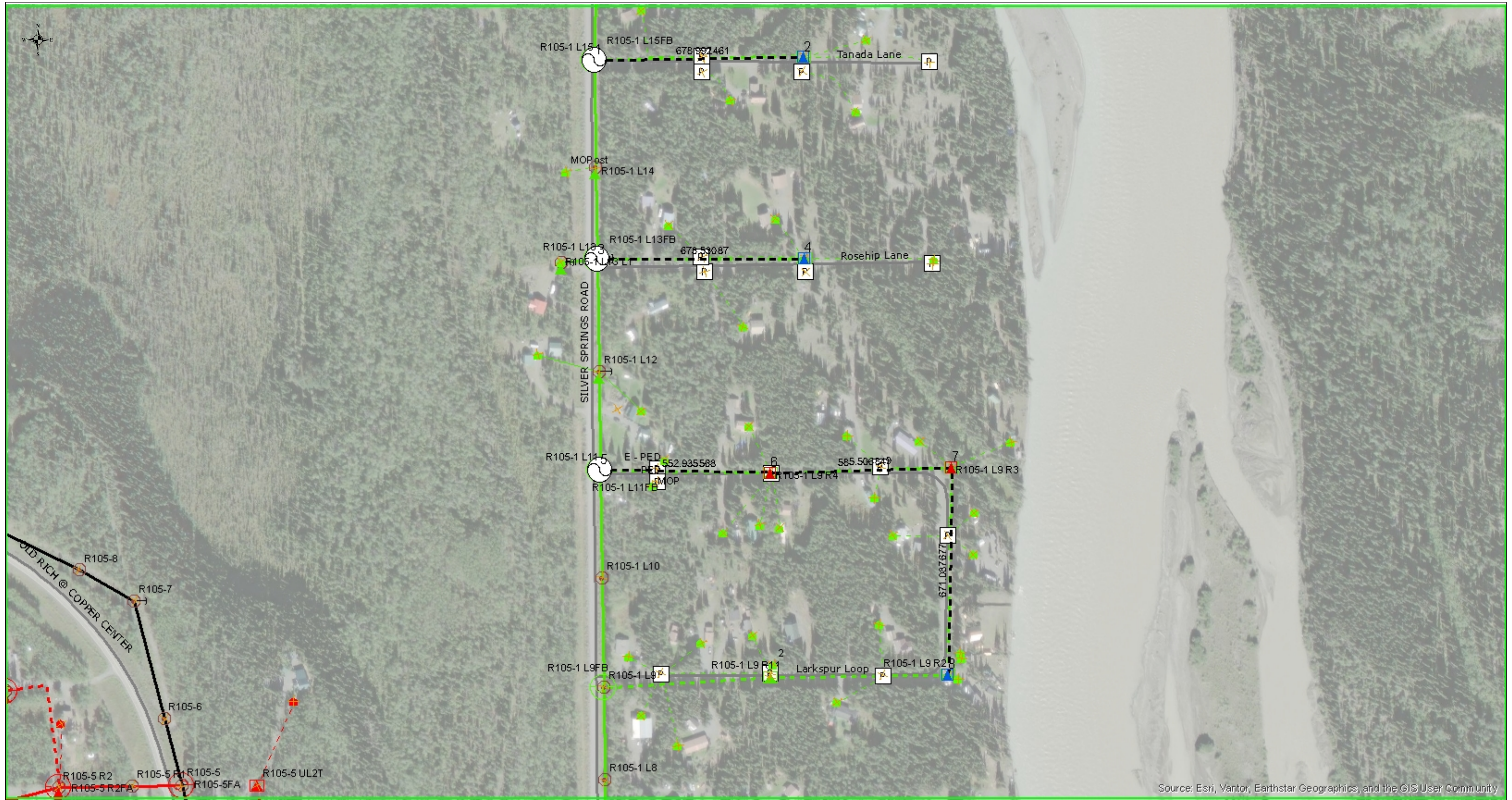
<b>Name:</b> SILVER SPRINGS URD REPLACEMENT							<b>Work Order #:</b> 26006		<b>SO Number:</b>	
<b>Service Address:</b>							<b>Staked By:</b>		<b>Date:</b>	
<b>Description:</b> Silver Springs URD Replacement							<b>Staking Sheet By:</b> lag		<b>Date:</b> 03/12/2026	
<b>County:</b>	<b>Township:</b>	<b>Subdiv.:</b>	<b>Design Ruling Span:</b>	<b>Tax District:</b>		<b>740C Code:</b>		<b>Released By:</b>		<b>Date:</b>
<b>State:</b>	<b>Range:</b>	<b>Block:</b>	<b>Actual Ruling Span:</b> 0	<b>Primary Wire Size:</b>		<b>Phase:</b>		<b>Const Comp By:</b>		<b>Date:</b>
<b>CIRCUIT:</b>	<b>Section:</b>	<b>Lot:</b>	<b>Substation:</b> 6 - Glennallen		<b>Feeder:</b>					



E R C	STATION NUMBER EML	POLE HEIGHT & CLASS	PRIMARY							GUY & ANCHOR			SECONDARY		METER OR LOOP	
			PRIMARY UNIT	BACK SPAN (FT.)	WIRE SIZE	MISC UNIT	LAT/LONG	XFMR	SIZE	GRND UNIT	GUY	LEAD	ANCHOR UNIT	UNIT "J OR K"		WIRE SIZE
E	1 R105-1 L15FB	POLE40	VS1.01_G			VS1.1F_G	62.015186 -145.335493			H1.1_G						
E			VA6.2_G													
R			UA1_G													
C			UA1_G													
E	2 TRFC03N01W2						62.015194 -145.331541	UM1-7NC_G		UM48-1_						
R				679	1/0EPR260_G			UG6_G								
R								X_UD1:25:120/25								
C				679	1/0EPR260_G	(679) 40PVC2_G		UG6_G								
C								X_UD1:25:120/25								
E	3 R105-1 L13FB	POLE40	VA5.1_G			VS1.1F_G	62.013416 -145.335476			H1.1_G	E1.1_G		F2.12_G			
E			VA1.2_G													
E			VS1.01_G													
R			UA1_G													
C			UA1_G													
cutout on pri riser																
E	4 TRFC03N01W2						62.013406 -145.331556	UM1-7NC_G		UM48-1_						
R				674	2UD15KV_G			X_UD1:25:120/25								
R								UG6_G								
C				674	1/0EPR260_G	(674) 40PVC2_G		UG6_G								
C								X_UD1:25:120/25								
E	5 R105-1 L11FB	POLE40	VS1.01_G			VS1.1F_G	62.011551 -145.335458			H1.1_G						
E			VA6.1_G													
R			UA1_G													
C			UA1_G													
E	6 TRFC03N01W2						62.011512 -145.332242	UM1-7NC_G		UM48-1_						
R				553	1/0UD25KV_G			UG7_G								
R								X_UD1:25:120/25								
C				553	1/0EPR260_G	(553) 40PVC2_G		UG7_G								
C								X_UD1:25:120/25								
xfmr poss hit, not flush with road. old																



<b>Name:</b> SILVER SPRINGS URD REPLACEMENT			<b>Work Order #:</b> 26006			<b>SO Number:</b>	
<b>Service Address:</b>						<b>Staked By:</b>	
<b>Description:</b> Silver Springs URD Replacement						<b>Staking Sheet By:</b> lag	
<b>County:</b>	<b>Township:</b>	<b>Subdiv.:</b>	<b>Design Ruling Span:</b>	<b>Tax District:</b>	<b>740C Code:</b>	<b>Date:</b> 03/12/2026	
<b>State:</b>	<b>Range:</b>	<b>Block:</b>	<b>Actual Ruling Span:</b> 0	<b>Primary Wire Size:</b>	<b>Phase:</b>	<b>Date:</b>	
<b>CIRCUIT:</b>	<b>Section:</b>	<b>Lot:</b>	<b>Substation:</b> 6 - Glennallen	<b>Feeder:</b>		<b>Const Comp By:</b>	



Source: Esri, Vantor, Earthstar Geographics, and the GIS User Community